



VETPRO X24 AUTOCLAVE

Maintenance Quick Guide Manual





VETPRO X24 AUTOCLAVE

MAINTENANCE

Items	Cleaning items	Cycle	Requirement
1	Sterilization chamber cleaning	Once a week	Keep clean without sewage
2	Clean water tank	Once a month	No dirt on the surface of the water tank
3	Drain filter	Once a month	Filter is transparent
4	Door seal	Once a week	No dirt on the surface
5	Water tank filter	Once a month	Filter is transparent

9.2.2 Checking plan

Items	Cleaning items	Cycle	Requirement
1	Inspection of safety valve	Every half year	Can be opened, and not opened during the sterilization phase
2	Storage tank liquid level sensor	Every half year	There will be a reminder when there is no water
3	Water quality detection function	Every half year	There will be a reminder when the water quality exceeds the standard
4	power cable	Every half year	No damage to external insulation
5	Button Battery	Every half year	The date and time are correct
6	Leak check	For the first time every day	The result is qualified

9.2.3 Maintenance plan

Items	Cleaning items	Cycle	Requirement
1	Bacteria filter replacement	Every 500 times	Insert firmly
2	Door seal replacement	Every 2000 times or 2 years	The wide side faces outwards, and the sealing is totally flat
3	Printer paper replacement	When the printer is out of paper or is about to run out of paper	The thermal side of the paper is facing up, no paper jam
4	Replace the button battery	Every 2 years	The date and time are correct, and the date and time are correct 5 minutes after power off
5	Adjust the door	When any steam leakage	The door not leakage, and Close and open the door with the right amount of force

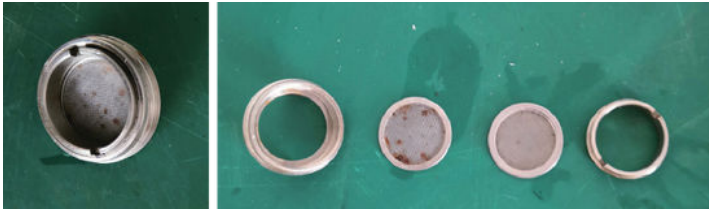
MAINTENANCE

VETPRO X24 AUTOCLAVE

MAINTENANCE

Drain filter cleaning

There is a drainage filter at the front of the sterilization chamber; Turn counterclockwise to remove the drain filter in the sterilization chamber; Unscrew the internal pressure ring of the drainage filter; Clean the 2 filters inside; Reassemble the filter: Note that the filter with the thick mesh is put in first, then the one with the fine mesh, and then screwed in the pressure ring. Screw the drain filter into the sterilization chamber.



Cleaning of the door seal: Check whether there is any foreign matter sticking on the sealing surface of the door seal, and remove it if there is any. Then wipe the sealing surface of the door seal with a towel dipped in clean water.

Clean the water tank filter

Bacteria filter replacement

Located to the right of the chamber entrance. Rotate the bacterial filter counterclockwise to take it out, take a new one and screw it clockwise.

Door Seal replacement

Tool: The user needs a screwdriver without sharp.

- 1) Hold the seal ring by a hand and use another one to hold a screwdriver carefully to separate the door and the seal ring. Then take the seal ring out slowly.
- 2) After the user takes the seal ring out, clean and check it, if it is damaged, the user must replace it.
- 3) After the seal ring is cleaned, put it back.



Adjust the door

- 1) Push down the lever a little
- 2) Turning the door to an angle
- 3) Release the lever
- 4) Keep turning the door to a place where the door cannot move anymore.

